

# Möbel

Upholstery programme

## Endless Possibilities

One of the defining features of a Møbel Copenhagen design is its ability to seamlessly adapt to any interior project and architecture. While our design language remains beautifully neutral, the opportunities for customization are truly endless.

We offer total creative freedom to mix and match materials, textures, and colours. You can explore bold textile combinations or utilize the piping to create either a subtle, tone-in-tone look or a striking contrast. Beyond the surface, we provide the flexibility to tailor frames in custom RAL colours, adjust seat heights, and modify proportions to fit specific spatial or ergonomic requirements.

Instead of dictating a rigid style, we provide a flexible, creative framework for architects, designers, and dreamers to bring their unique visions to life.



## The Upholstery Programme

To support this vision, we offer an extensive palette of fabrics, leathers, and outdoor materials, divided into five distinct price groups. The collection presented here represents a curated selection of approved options. However, this is only a glimpse of what is possible. We are always happy to accommodate other textiles—either as COM (Customer's Own Material) or by sourcing specific materials for your project. Please do not hesitate to ask.

### PRICE GROUP 1

**ATLANTIC** GABRIEL  
**ATLANTIS** ROMO  
**AUTUMN** KVADRAT  
**BARNUM** NEVOTEX  
**GUEST** FKVADRAT  
**HERO 2** KVADRAT  
**LIDO/ LIDO TREND** NEVOTEX  
**LUCIA CS** CAMIRA  
**MAIN LINE FLAX** CAMIRA  
**MARGRETHE** NEVOTEX  
**MEGAN+** NEVOTEX  
**MICA** GABRIEL  
**OCEANIC** CAMIRA  
**PICNIC** ROMO  
**REMIX 3** KVADRAT  
**RIVET** CAMIRA  
**SEALIFE** NEVOTEX  
**SUMI** CAMIRA  
**SUNNY** ROMO  
**TECHNICOLOUR** KVADRAT  
**TELAMIA** KVADRAT  
**VEGAS** NEVOTEX  
**WOOLY & WOOLY** NEVOTEX  
**PLUS/TREND**  
**SIERRA** CAMO  
**ILLUSION 3.0** NEVOTEX  
**FULL GRAIN**  
**PAROTEGA** SKAI  
**ASGARD** NEVOTEX  
**GARDEN PLAIN** NEVOTEX  
**GARDEN STRIPE** NEVOTEX  
**NATTÉ** SUNBRELLA  
**SAVANE** SUNBRELLA

### PRICE GROUP 2

**ASATOR APRIL** KVADRAT  
**BARNUM STRIPE** NEVOTEX  
**BLAZER** CAMIRA  
**ELIO FR** ROMO  
**FAME** GABRIEL  
**HAKU** KVADRAT  
**HERO HEATHER** KVADRAT  
**MYLLA** KVADRAT  
**MYR** KVADRAT  
**RITZ/ RITZ TREND** NEVOTEX  
**RUSKIN** FABRIC  
**STEELCUT TRIO 3** KVADRAT  
**STEP MELANGE** GABRIEL  
**SYNERGY** CAMIRA  
**BARI** CAMO  
**LOPI** SUNBRELLA

### PRICE GROUP 3

**ATLAS** KVADRAT  
**BALBOA** KVADRAT  
**CLAY** KVADRAT  
**DIVINA 3** KVADRAT  
**ECRITURE** KVADRAT  
**GAJA** GABRIEL  
**GAJA CLASSIC** GABRIEL  
**HALLINGDAL 65** KVADRAT  
**ICE** ROMO  
**LOOP** ROMO  
**MOSS** KVADRAT  
**SAFIRE 2** KVADRAT  
**SAVANNA** KVADRAT  
**ELMOCOAST** ELMO  
**KENYA** CAMO  
**MAMMUT\*** CAMO  
**SYDNEY** CAMO  
**ULTRA CRIB 5** SØRENSEN

### PRICE GROUP 4

**DIVINA MD** KVADRAT  
**ELLE** KVADRAT  
**FIRTH** MAHARAM  
**GEMMA** MAHARAM  
**GEMMA MULTI** MAHARAM  
**HEARTH** MAHARAM  
**MOLLY 2** KVADRAT  
**SAXION** KVADRAT  
**STEELCUT 3** KVADRAT  
**TEDDY FR** ROMO  
**TONUS 4** KVADRAT  
**VIDAR 4** KVADRAT  
**ZERO** KVADRAT  
**ELMOVINTAGE** ELMO  
**HERO** SØRENSEN  
**ONE** CAMO

### PRICE GROUP 5

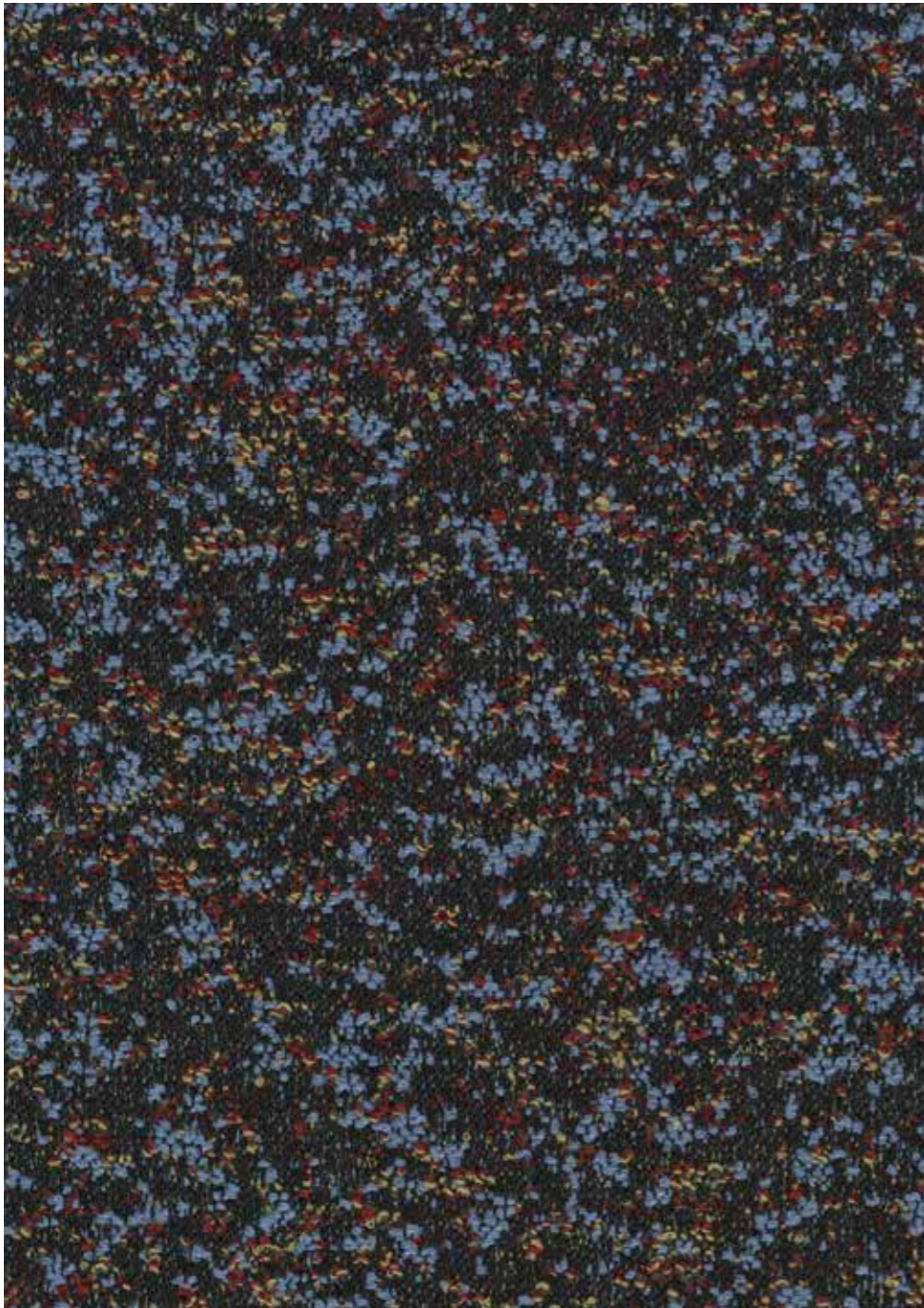
**CODA 2** KVADRAT  
**GENTLE 2** KVADRAT  
**MADISON FR** ROMO  
**SISU** KVADRAT  
**SNUG** CAMIRA  
**ELMOBALTIQUE** ELMO  
**ELMORUSTICAL** ELMO  
**ELMOSOFT** ELMO  
**IMPERIA** CAMO  
**NEVADA** CAMO  
**NUANCE** SØRENSEN  
**PALOMA\*** CAMO  
**SAVANNE** SØRENSEN  
**SILK** CAMO  
**SHEEPSKIN**

## Raf Simons Exclusive Collection

Please be aware that selected textiles from Kvadrat cannot be ordered freely. For the Raf Simons Exclusive Collection, we are required to obtain prior approval from Kvadrat before an order can be placed.

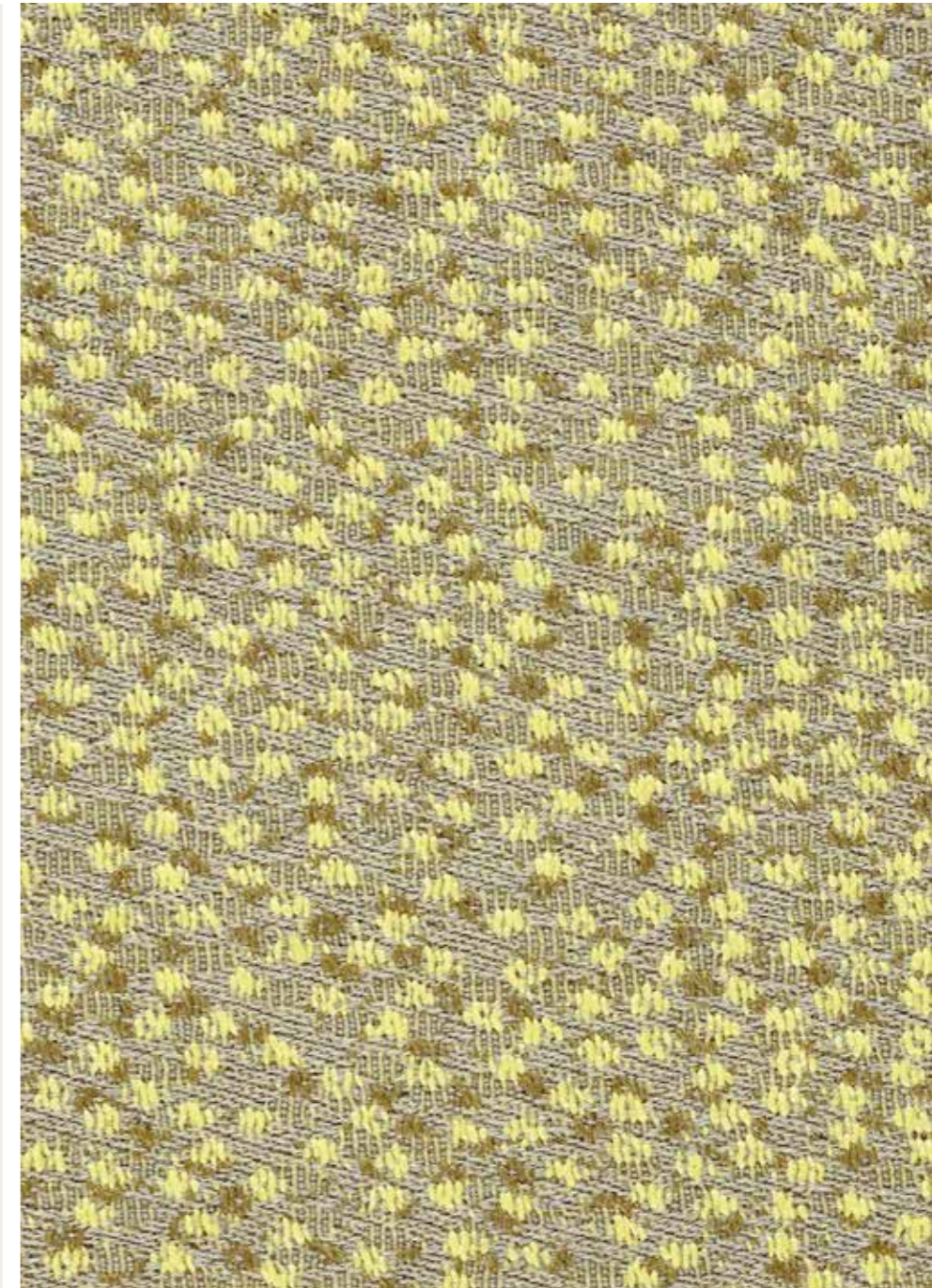
To secure this approval, we must provide Kvadrat with the following project documentation:

- Project Details: A description of the specific project involved.
- Architect Information: The name of the architect leading the project.



### Applicable Textiles

[Aaren](#)  
[Argo2](#)  
[Atom](#)  
[Einar](#)  
[Fuse](#)  
[Helia](#)  
[Phlox](#)  
[Reflex](#)  
[Ria2](#)  
[Sonar](#)  
[Hafnon](#)



## COM / COL ORDERS

For COM/COL orders on FONT collection and TAKU collection then we need this document to be enclosed to avoid delays and misplacements.

**Delivery address is:**

Kartap  
8 Kiszowska Rd.  
Warehouse No.6 Goja Trading Centre  
62-200 Gniezno  
POLAND  
Att. Dominik Dymalski  
Email: dominik@mobel-copenhagen.com  
Tel: +48 793 905 057

For materials shipped from outside EU, please ship with DDP incoterms.

If not sent DDP then shipment might be delayed and there will be a fee on €100, - for Møbel's assistance, plus all additional cost related to the import.

Please send us the tracking link for the material with the MØBEL order number to [orders@mobel-copenhagen.com](mailto:orders@mobel-copenhagen.com)

MØBEL order no

---

MØBEL customer name

---

COM/COL material name

---

COM/COL running m2

---

MØBEL product

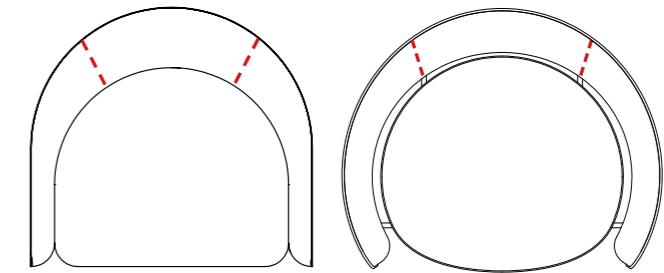
---

Please note that the lead time is from the moment that the material has arrived at our production.

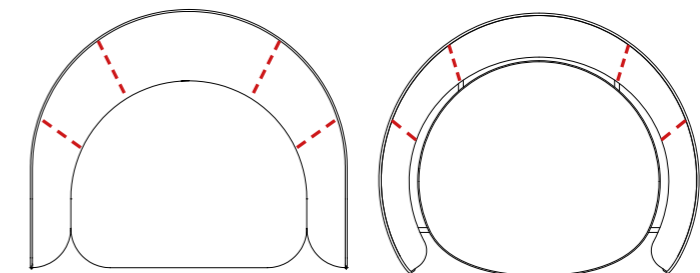
This document needs to be attached on the package.

Møbel reserve the right to add additional parting lines in the COM/COL material if it is challenging to upholster with.

**2 PARTING LINES**  
STANDARD



**4 PARTING LINES**  
NEEDED FOR  
SELECTED FABRICS



# Möbel

CHRISTIANSHUSVEJ 4  
2970 HØRSHOLM  
DENMARK

HELLO@MOBEL-COPENHAGEN.COM  
WWW.MOBEL-COPENHAGEN.COM

FOLLOW US

[Instagram](#)

[Pinterest](#)

[LinkedIn](#)

[Facebook](#)

[Website](#)